

ACCESSORI PER FUSTELLE PIANE E ROTATIVE

FILETTO IN ACCIAIO DA TAGLIO PER FUSTELLE PIANE: disponibile NORMALE o HF

CODICE	DESCRIZIONE	Dimensioni
FNA.120.053	2 biselli – A -	12,0x0,53
FNA.228.053	2 biselli – A -	22,8x0,71
FNA.230.053	2 biselli – A -	23,0x0,53
FNA.120.071	2 biselli – A -	12,0x0,71
FNA.233.071	2 biselli – A -	23,3x0,71
FNA.234.071	2 biselli – A -	23,4x0,71
FNA.235.071	2 biselli – A -	23,5x0,71
FNA.238.071	2 biselli – A -	23,8x0,71
FNA.300.071	2 biselli – A -	30,0x0,71
FNA.238.107	2 biselli – A -	23,8x1,07

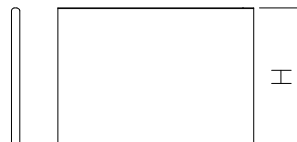


CODICE	DESCRIZIONE	Dimensioni
FAA.238.071	4 biselli – AA -	23,8x0,71
FAA.300.071	4 biselli – AA -	30,0x0,71
FAA.238.105	4 biselli – AA -	23,8x1,05
FAA.286.105	4 biselli – AA -	28,6x1,05
FAA.300.105	4 biselli – AA -	30,0x1,05
FAA.400.105	4 biselli – AA -	40,0x1,05
FAA.500.105	4 biselli – AA -	50,0x1,05
FAA.600.105	4 biselli – AA -	60,0x1,05
FAA.238.142	4 biselli – AA -	23,8x1,42
FAA.254.142	4 biselli – AA -	25,4x1,42
FAA.300.150	4 biselli – AA -	30,0x1,50
FAA.400.150	4 biselli – AA -	40,0x1,50
FAA.500.150	4 biselli – AA -	50,0x1,50
FAA.600.150	4 biselli – AA -	60,0x1,50



FILETTO IN ACCIAIO CORDONATORE PER FUSTELLE PIANE:

CODICE	Dimensioni	CODICE	Dimensioni
FCO.228.071	22,8x0,71	FCO.230.071	23,0x0,71
FCO.231.071	23,1x0,71	FCO.232.071	23,2x0,71
FCO.233.071	23,3x0,71	FCO.234.071	23,4x0,71
FCO.235.071	23,5x0,71	FCO.236.071	23,6x0,71
FCO.224.105	22,4x1,05	FCO.225.105	22,5x1,05
FCO.226.105	22,6x1,05	FCO.228.105	22,8x1,05
FCO.230.105	23,0x1,05	FCO.231.105	23,1x1,05
FCO.232.105	23,2x1,05	FCO.233.105	23,3x1,05
FCO.234.105	23,4x1,05	FCO.235.105	23,5x1,05
FCO.238.105	23,8x1,05	FCO.264.105	26,4x1,05
FCO.276.105	27,6x1,05		
FCO.200.142	20,0x1,42	FCO.205.142	20,5x1,42
FCO.210.142	21,0x1,42	FCO.215.142	21,5x1,42
FCO.220.142	22,0x1,42	FCO.222.142	22,2x1,42
FCO.226.142	22,6x1,42	FCO.228.142	22,8x1,42
FCO.230.142	23,0x1,42	FCO.232.142	23,2x1,42
FCO.235.142	23,5x1,42		



FILETTO IN ACCIAIO PERFORATORE PER FUSTELLE PIANE:

CODICE	Dimensioni	Passo Perforazione
PPF.071...	23,8x0,71	passo a richiesta
PPF.105...	23,8x1,05	passo a richiesta

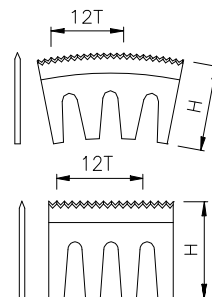
FILETTO IN ACCIAIO PER ESTRATTORI:

CODICE	Dimensioni	CODICE	Dimensioni
FES.015.071	15,0x0,71	FES.018.071	18,0x0,71
FES.030.071	30,0x0,71	FES.050.071	50,0x0,71
FES.015.105	15,0x1,05	FES.018.105	18,0x1,05
FES.030.105	30,0x1,05	FES.050.105	50,0x1,05 (anche zincato)
FES.018.142	18,0x1,42	FES.050.142	50,0x1,42

ACCESSORI PER FUSTELLE PIANE E ROTATIVE

FILETTO IN ACCIAIO PER FUSTELLE ROTATIVE: TAGLIO CENTRALE DENTELLATO - 12 denti/pollice

CODICE	DESCRIZIONE	Dimensioni
FTR.238.142	Dritto / con tacche / Curvo	23,8x1,42
FTR.244.142	Dritto / con tacche / Curvo	24,4x1,42
FTR.254.142	Dritto / con tacche / Curvo	25,4x1,42
FTR.261.142	Dritto / con tacche / Curvo	26,1x1,42
FTR.300.142	Dritto / con tacche / Curvo	30,0x1,42

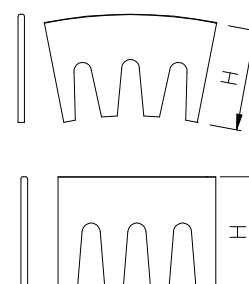


TAGLIO-CORDONATORE CENTRALE DENTELLATO - 12 denti/pollice

CODICE	DESCRIZIONE	Dimensioni
FTC.238.142	Dritto / con tacche / Curvo	23,8xHCx1,42
FTC.244.142	Dritto / con tacche / Curvo	24,4xHCx1,42
FTC.254.142	Dritto / con tacche / Curvo	25,4xHCx1,42

FILETTO CORDONATORE

CODICE	DESCRIZIONE	Dimensioni
FCR.195.142	Dritto / con tacche / Curvo	19,5x1,42
FCR.200.142	Dritto / con tacche / Curvo	20,0x1,42
FCR.205.142	Dritto / con tacche / Curvo	20,5x1,42
FCR.210.142	Dritto / con tacche / Curvo	21,0x1,42
FCR.215.142	Dritto / con tacche / Curvo	21,5x1,42
FCR.220.142	Dritto / con tacche / Curvo	22,0x1,42
FCR.222.142	Dritto / con tacche / Curvo	22,2x1,42
FCR.226.142	Dritto / con tacche / Curvo	22,6x1,42
FCR.228.142	Dritto / con tacche / Curvo	22,8x1,42
FCR.230.142	Dritto / con tacche / Curvo	23,0x1,42



FILETTO PERFORATORE CENTRALE - 12 denti/pollice

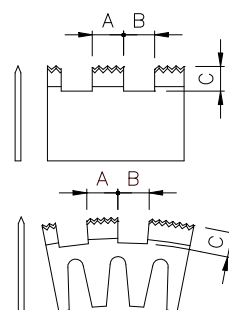
CODICE	DESCRIZIONE	Dimensioni
FPR.238.142	Dritto / con tacche / Curvo	23,8x1,42
FPR.244.142	Dritto / con tacche / Curvo	24,4x1,42
FPR.254.142	Dritto / con tacche / Curvo	25,4x1,42

Passi standard: 3x3 - 4x4 - 5x5 - 6,5x6,5 - 8x8 - 10x10 - 15x15

FILETTO PERFORATORE CENTRALE DENTELLATO - 12 denti/pollice

CODICE	DESCRIZIONE	Dimensioni
FPD.238.142	Dritto / con tacche / Curvo	23,8x1,42
FPD.244.142	Dritto / con tacche / Curvo	24,4x1,42
FPD.254.142	Dritto / con tacche / Curvo	25,4x1,42

Passi standard:
3x3 - 4x4 - 5x5 - 6,5x6,5 - 8x8 - 10x10 - 15x15

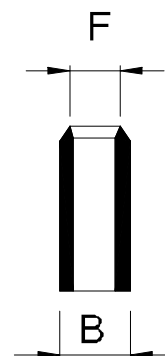


FUSTELLINE

FORO PASSANTE

(Confezioni da 50 pz.)

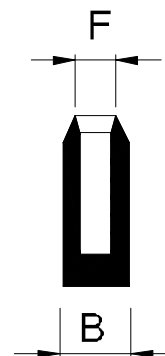
CODICE	DESCRIZIONE	CODICE	DESCRIZIONE
FFP.015.030	F.P. F. 1,5 B. 3,0	FFP.120.150	F.P. F. 12,0 B. 15,0
FFP.020.040	F.P. F. 2,0 B. 4,0	FFP.120.160	F.P. F. 12,0 B. 16,0
FFP.020.050	F.P. F. 2,0 B. 5,0	FFP.125.160	F.P. F. 12,5 B. 16,0
FFP.025.045	F.P. F. 2,5 B. 4,5	FFP.130.160	F.P. F. 13,0 B. 16,0
FFP.025.050	F.P. F. 2,5 B. 5,0	FFP.130.170	F.P. F. 13,0 B. 17,0
FFP.030.050	F.P. F. 3,0 B. 5,0	FFP.135.160	F.P. F. 13,5 B. 16,0
FFP.030.060	F.P. F. 3,0 B. 6,0	FFP.135.170	F.P. F. 13,5 B. 17,0
FFP.035.055	F.P. F. 3,5 B. 5,5	FFP.140.170	F.P. F. 14,0 B. 17,0
FFP.035.060	F.P. F. 3,5 B. 6,0	FFP.140.170	F.P. F. 14,0 B. 18,0
FFP.040.060	F.P. F. 4,0 B. 6,0	FFP.145.170	F.P. F. 14,5 B. 17,0
FFP.040.070	F.P. F. 4,0 B. 7,0	FFP.145.180	F.P. F. 14,5 B. 18,0
FFP.045.070	F.P. F. 4,5 B. 7,0	FFP.150.180	F.P. F. 15,0 B. 18,0
FFP.050.080	F.P. F. 5,0 B. 8,0	FFP.150.200	F.P. F. 15,0 B. 20,0
FFP.055.080	F.P. F. 5,5 B. 8,0	FFP.155.180	F.P. F. 15,5 B. 18,0
FFP.060.090	F.P. F. 6,0 B. 9,0	FFP.155.200	F.P. F. 15,5 B. 20,0
FFP.065.090	F.P. F. 6,5 B. 9,0	FFP.160.190	F.P. F. 16,0 B. 19,0
FFP.070.100	F.P. F. 7,0 B. 10,0	FFP.160.210	F.P. F. 16,0 B. 21,0
FFP.075.100	F.P. F. 7,5 B. 10,0	FFP.165.190	F.P. F. 16,5 B. 19,0
FFP.075.110	F.P. F. 7,5 B. 11,0	FFP.165.210	F.P. F. 16,5 B. 21,0
FFP.080.110	F.P. F. 8,0 B. 11,0	FFP.170.200	F.P. F. 17,0 B. 20,0
FFP.085.110	F.P. F. 8,5 B. 11,0	FFP.170.220	F.P. F. 17,0 B. 22,0
FFP.085.120	F.P. F. 8,5 B. 12,0	FFP.175.200	F.P. F. 17,5 B. 20,0
FFP.090.120	F.P. F. 9,0 B. 12,0	FFP.175.220	F.P. F. 17,5 B. 22,0
FFP.090.130	F.P. F. 9,0 B. 13,0	FFP.180.210	F.P. F. 18,0 B. 21,0
FFP.095.120	F.P. F. 9,5 B. 12,0	FFP.180.230	F.P. F. 18,0 B. 23,0
FFP.095.130	F.P. F. 9,5 B. 13,0	FFP.185.210	F.P. F. 18,5 B. 21,0
FFP.100.130	F.P. F. 10,0 B. 13,0	FFP.185.230	F.P. F. 18,5 B. 23,0
FFP.100.140	F.P. F. 10,0 B. 14,0	FFP.190.220	F.P. F. 19,0 B. 22,0
FFP.105.130	F.P. F. 10,5 B. 13,0	FFP.190.240	F.P. F. 19,0 B. 24,0
FFP.105.140	F.P. F. 10,5 B. 14,0	FFP.195.220	F.P. F. 19,5 B. 22,0
FFP.110.140	F.P. F. 11,0 B. 14,0	FFP.195.240	F.P. F. 19,5 B. 24,0
FFP.110.150	F.P. F. 11,0 B. 15,0	FFP.200.230	F.P. F. 20,0 B. 23,0
FFP.115.140	F.P. F. 11,5 B. 14,0	FFP.200.250	F.P. F. 20,0 B. 25,0
FFP.115.150	F.P. F. 11,5 B. 15,0	FFP.205.250	F.P. F. 20,5 B. 25,0



FORO CIECO

(Confezioni da 50 pz.)

CODICE	DESCRIZIONE	CODICE	DESCRIZIONE
FFC.020.025	F.C. F. 2,0 B. 2,5	FFC.090.100	F.C. F. 9,0 B. 10,0
FFC.020.030	F.C. F. 2,0 B. 3,0	FFC.095.100	F.C. F. 9,5 B. 10,0
FFC.020.050	F.C. F. 2,0 B. 5,0	FFC.100.110	F.C. F. 10,0 B. 11,0
FFC.025.030	F.C. F. 2,5 B. 3,0	FFC.105.110	F.C. F. 10,5 B. 11,0
FFC.025.050	F.C. F. 2,5 B. 5,0	FFC.110.120	F.C. F. 11,0 B. 12,0
FFC.030.035	F.C. F. 3,0 B. 3,5	FFC.115.120	F.C. F. 11,5 B. 12,0
FFC.030.050	F.C. F. 3,0 B. 5,0	FFC.120.130	F.C. F. 12,0 B. 13,0
FFC.035.040	F.C. F. 3,5 B. 4,0	FFC.125.130	F.C. F. 12,5 B. 13,0
FFC.035.050	F.C. F. 3,5 B. 5,0	FFC.130.140	F.C. F. 13,0 B. 14,0
FFC.040.045	F.C. F. 4,0 B. 4,5	FFC.135.140	F.C. F. 13,5 B. 14,0
FFC.040.050	F.C. F. 4,0 B. 5,0	FFC.140.150	F.C. F. 14,0 B. 15,0
FFC.045.050	F.C. F. 4,5 B. 5,0	FFC.145.150	F.C. F. 14,5 B. 15,0
FFC.050.055	F.C. F. 5,0 B. 5,5	FFC.150.160	F.C. F. 15,0 B. 16,0
FFC.050.060	F.C. F. 5,0 B. 6,0	FFC.155.160	F.C. F. 15,5 B. 16,0
FFC.055.060	F.C. F. 5,5 B. 6,0	FFC.160.170	F.C. F. 16,0 B. 17,0
FFC.060.065	F.C. F. 6,0 B. 6,5	FFC.165.170	F.C. F. 16,5 B. 17,0
FFC.060.070	F.C. F. 6,0 B. 7,0	FFC.170.180	F.C. F. 17,0 B. 18,0
FFC.065.070	F.C. F. 6,5 B. 7,0	FFC.175.180	F.C. F. 17,5 B. 18,0
FFC.070.075	F.C. F. 7,0 B. 7,5	FFC.180.190	F.C. F. 18,0 B. 19,0
FFC.070.080	F.C. F. 7,0 B. 8,0	FFC.185.190	F.C. F. 18,5 B. 19,0
FFC.075.080	F.C. F. 7,5 B. 8,0	FFC.190.200	F.C. F. 19,0 B. 20,0
FFC.080.085	F.C. F. 8,0 B. 8,5	FFC.195.200	F.C. F. 19,5 B. 20,0
FFC.080.090	F.C. F. 8,0 B. 9,0	FFC.200.210	F.C. F. 20,0 B. 21,0
FFC.085.090	F.C. F. 8,5 B. 9,0		

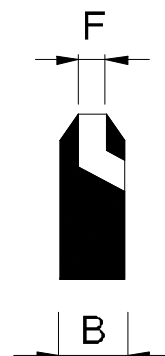


FUSTELLINE

SCARICO LATERALE

(Confezioni da 50 pz.)

CODICE	DESCRIZIONE	CODICE	DESCRIZIONE
FSL.010.025	S.L. F. 1,0 B. 2,5	FSL.060.080	S.L. F. 6,0 B. 8,0
FSL.015.030	S.L. F. 1,5 B. 3,0	FSL.060.090	S.L. F. 6,0 B. 9,0
FSL.020.040	S.L. F. 2,0 B. 4,0	FSL.060.110	S.L. F. 6,0 B. 11,0
FSL.020.050	S.L. F. 2,0 B. 5,0	FSL.065.090	S.L. F. 6,5 B. 9,0
FSL.020.060	S.L. F. 2,0 B. 6,0	FSL.065.110	S.L. F. 6,5 B. 11,0
FSL.025.045	S.L. F. 2,5 B. 4,5	FSL.070.090	S.L. F. 7,0 B. 9,0
FSL.025.050	S.L. F. 2,5 B. 5,0	FSL.070.100	S.L. F. 7,0 B. 10,0
FSL.025.060	S.L. F. 2,5 B. 6,0	FSL.070.110	S.L. F. 7,0 B. 11,0
FSL.030.050	S.L. F. 3,0 B. 5,0	FSL.075.100	S.L. F. 7,5 B. 10,0
FSL.030.060	S.L. F. 3,0 B. 6,0	FSL.075.110	S.L. F. 7,5 B. 11,0
FSL.030.070	S.L. F. 3,0 B. 7,0	FSL.080.100	S.L. F. 8,0 B. 10,0
FSL.035.055	S.L. F. 3,5 B. 5,5	FSL.080.110	S.L. F. 8,0 B. 11,0
FSL.035.060	S.L. F. 3,5 B. 6,0	FSL.080.120	S.L. F. 8,0 B. 12,0
FSL.040.060	S.L. F. 4,0 B. 6,0	FSL.085.110	S.L. F. 8,5 B. 11,0
FSL.040.080	S.L. F. 4,0 B. 8,0	FSL.085.120	S.L. F. 8,5 B. 12,0
FSL.045.070	S.L. F. 4,5 B. 7,0	FSL.090.110	S.L. F. 9,0 B. 11,0
FSL.045.080	S.L. F. 4,5 B. 8,0	FSL.090.130	S.L. F. 9,0 B. 13,0
FSL.050.070	S.L. F. 5,0 B. 7,0	FSL.095.130	S.L. F. 9,5 B. 12,0
FSL.050.080	S.L. F. 5,0 B. 8,0	FSL.095.130	S.L. F. 9,5 B. 13,0
FSL.050.090	S.L. F. 5,0 B. 9,0	FSL.100.120	S.L. F. 10,0 B. 12,0
FSL.055.080	S.L. F. 5,5 B. 8,0	FSL.100.140	S.L. F. 10,0 B. 14,0
FSL.055.090	S.L. F. 5,5 B. 9,0		



ESPULSORE A MOLLA

(Confezioni da 50 pz.)

CODICE	DESCRIZIONE	CODICE	DESCRIZIONE
FEM.020.090	E.M. F. 2,0 B. 9,0	FEM.075.100	E.M. F. 7,5 B. 10,0
FEM.025.090	E.M. F. 2,5 B. 9,0	FEM.080.090	E.M. F. 8,0 B. 9,0
FEM.030.090	E.M. F. 3,0 B. 9,0	FEM.080.110	E.M. F. 8,0 B. 11,0
FEM.035.090	E.M. F. 3,5 B. 9,0	FEM.085.090	E.M. F. 8,5 B. 9,0
FEM.040.090	E.M. F. 4,0 B. 9,0	FEM.085.110	E.M. F. 8,5 B. 11,0
FEM.045.090	E.M. F. 4,5 B. 9,0	FEM.090.110	E.M. F. 9,0 B. 11,0
FEM.050.090	E.M. F. 5,0 B. 9,0	FEM.090.130	E.M. F. 9,0 B. 13,0
FEM.055.090	E.M. F. 5,5 B. 9,0	FEM.095.110	E.M. F. 9,5 B. 11,0
FEM.060.090	E.M. F. 6,0 B. 9,0	FEM.095.130	E.M. F. 9,5 B. 13,0
FEM.060.100	E.M. F. 6,0 B. 10,0	FEM.100.120	E.M. F. 10,0 B. 12,0
FEM.065.090	E.M. F. 6,5 B. 9,0	FEM.100.130	E.M. F. 10,0 B. 13,0
FEM.065.100	E.M. F. 6,5 B. 10,0	FEM.105.130	E.M. F. 10,5 B. 13,0
FEM.070.090	E.M. F. 7,0 B. 9,0	FEM.110.130	E.M. F. 11,0 B. 13,0
FEM.070.100	E.M. F. 7,0 B. 10,0	FEM.115.130	E.M. F. 11,5 B. 13,0
FEM.075.090	E.M. F. 7,5 B. 9,0	FEM.120.130	E.M. F. 12,0 B. 13,0

